



System software for refrigeration plant monitoring AK Monitor

Contents

Welcome to the AK Monitor software pack.....	3
How to start AK Monitor	4
How to stop AK Monitor	4
First look for alarms	5
Plant overview.....	6
Graphic plant overview	6
Plant lists.....	6
1. Overview of air temperatures and alarms.....	6
2. Defrost times and extra defrosts	8
3. Setting of temperatures in refrigeration appliances.....	9
History.....	10
Alarms.....	10
Logs	11
Export Logs.....	13
View exported logs	13
Print graph survey	13
Automatic delivery of printouts	14
Setup	14
Access control.....	15
Change password.....	15
Event log.....	15
Screen saver.....	16
Exit.....	16
Logoff	16
Appendix - Service via the plant overview	17

Welcome to the AK Monitor software pack

AK Monitor is an easy-to-grasp and easily accessible programme that offers you - and your staff - the possibility of deriving full benefit of your site's ADAP-KOOL® refrigeration controls. The programme is a simple and user-friendly version of its "big brother", AKM, which is used by installation businesses and service engineers.

With AK Monitor you can not only prove compliance with the ever more rigid requirements to temperature monitoring in food stores, made by the authorities in the EU-countries. You can also at all times obtain a complete overview of how the refrigerating plant in your shop is running - and how it has been running during the past month or year.

Another advantage of AK Monitor is that it is far easier for you to explain what may be wrong with your plant. That will save time when the service engineer pays you a visit.

AK Monitor is installed in an ordinary PC by a service engineer from your normal refrigerating firm. It is operated by the very user-friendly Windows which most PC users have gradually become acquainted with. Via a so-called gateway the programme obtains data from all the site's ADAP-KOOL® refrigeration controls.

AK Monitor has three main functions:

- It continuously measures the temperatures of the refrigerated counters freezers, and cold stores
- It stores the data that are required by the authorities
- It immediately gives alarm if the temperature rises above a pre-determined limit

AK Monitor is easy to take in. A brief description of the programme functions and options will nevertheless be given on the following pages. At the same time it should be emphasised that there are parts of it to which you and your staff have no access. AK Monitor contains service functions which your service engineer may use when he has to check the plant or find faults on it. The programme setup has likewise been left to him.

Finally it should be pointed out that this users guide describe one specific setup of AK Monitor for a supermarket. There are many ways of doing it, and it is you - in co-operation with your service engineer - who determine the shape of the overview of your refrigerating plant.

How to start AK Monitor

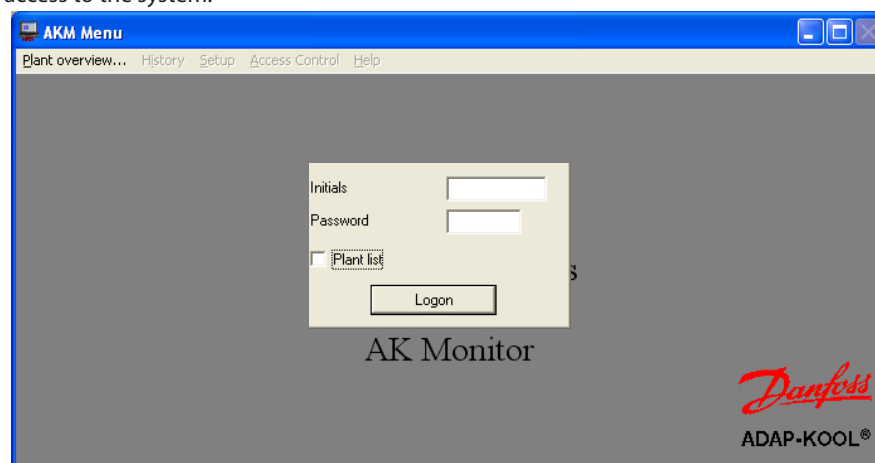
1. Start Windows. You will now obtain a presentation of the programmes that have been entered on the hard disk in the form of so-called icons.

2.



Click the mouse on the "AK Monitor" icon twice. The programme will now start. AK Monitor may however also be set to start automatically, as soon as the PC starts. This option considers power failures and the situation where a user forgets to restart the programme after having used the PC for other purposes. **Danfoss recommends this automatic start feature, as AK Monitor cannot register data when it is interrupted.**

3. The first display will show the menu structure for AK Monitor. In the middle of the screen there is a so-called dialogue box which asks you for the initials and the password that were entered during the installation. Without those, you are not able to "Logon" - and unauthorised persons cannot gain access to the system.



- Enter your own initials and password
- Activate Logon or Enter

Before logging on it is possible for you to place a cross in a small square field at the designation "Graphic Plant Overview". Put your cross here, if you are exclusively interested in knowing how the plant is operating right now.

If it is an AK monitor with MIMIC you have installed on your PC, it will be the graphic plant overview that will appear.

How to stop AK Monitor

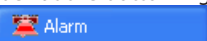


Activate the Logoff key when you have finished operating AK Monitor. Otherwise others may gain access in your name.

If the AK Monitor programme is to be stopped completely on the PC, select the menu "Exit" in the "Access control" menu. Then the programme will no longer be able to collect data and receive alarms.

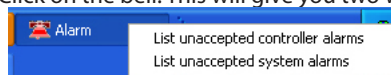
First look for alarms

When you have made AK Monitor operate in this way, you will in some cases encounter a flashing red bell at the bottom right corner.



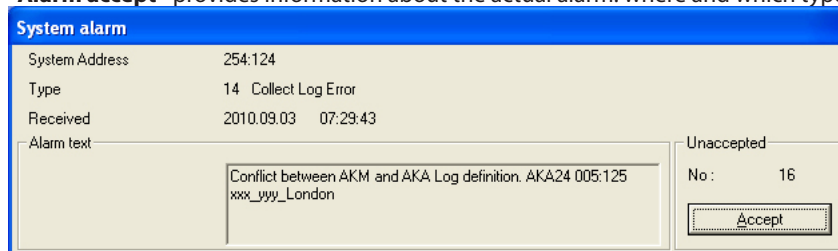
This icon means alarm, and this is the first thing you have to do:

- Click on the bell. This will give you two ways of handling the alarm message:



Click on one of the two menus to obtain the "Alarm accept" display on the screen.

"Alarm accept" provides information about the actual alarm: where and which type.

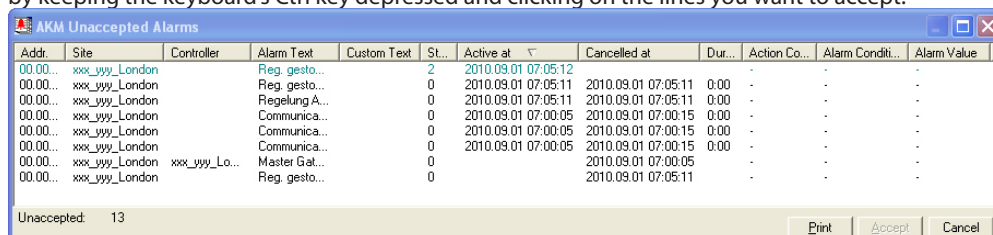


It is possible to accept the alarm, but if you find it too serious, you may leave it there, for instance until you have called a service engineer. You do this by clicking the mouse in the large window outside the alarm window.

If there are several alarms, they will be "placed in layers". Numbers 2, 3 etc. will then appear when you have accepted the first alarm.

To accept an alarm merely means that you have seen the alarm - so remember to take an initiative to have the error remedied.

List unaccepted AKC alarms gives you a complete overview of alarms received which you or others have not yet handled. Here it is possible to accept several alarms at one go. You do this by moving the arrow across the required lines with the mouse. Or you may "pick and choose" among the alarms by keeping the keyboard's Ctrl key depressed and clicking on the lines you want to accept.



Select one or more alarms and activate "Accept" to acknowledge that you have seen the alarms.

Note the display's heading. The heading would be different if only part of the alarms were shown. If you want to see more or other alarms than the ones shown, you can change the filtering via the "Views" function. (The filter function is described in the AKM Manual).

You can sort the alarms shown by pushing one of the column headings.

An alarm need not necessarily demand the visit of a service engineer. If the temperature is too high, for example, you may in many cases handle this problem yourself, e.g. by checking the stacking in the refrigeration appliances or by starting an extra defrost cycle. In the case of defects on sensors or on the compressor, the matter is best left with the service engineer.

Plant overview

When you have handled the alarms that may have arisen since you or someone else last used AK Monitor, you may subsequently move into the part of the programme named Plant overview. You do that by clicking on the line with the same name.

If you have installed an AK monitor with MIMIC on your PC, you can choose to see the plant overview in two ways, either as a graphic presentation of the plant overview or as plant lists. If your version is without MIMIC, you will see the plant lists.

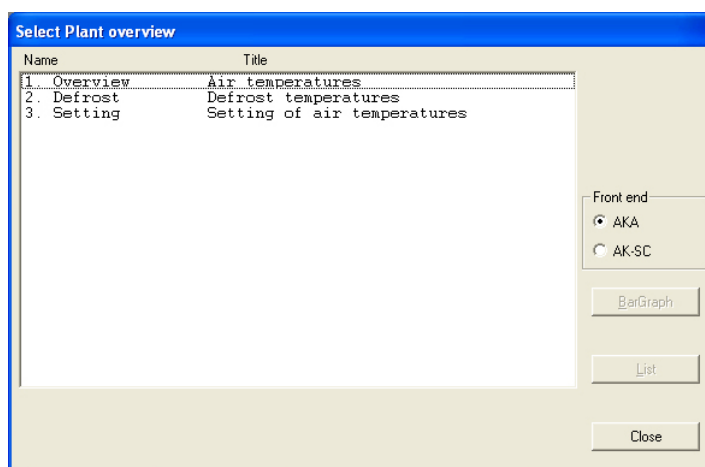
Graphic plant overview

Please refer to the AKM manual.

Plant lists

Here you will - with the setup selected here - have three approaches for the status of the refrigerating plant, viz Overview, Defrost and Setting. You choose between them by clicking on the required line with the mouse. All types of information can be shown either in the shape of lists or columns (there is a key for either option). If you select "List" you will receive a presentation of texts where it is possible to react to the information, whereas "BarGraph" will provide you with a purely graphical display.

1. Overview of air temperatures and alarms



On your plant there will probably be other names and texts than the ones shown here.

In this document the three points will offer you guidance in the principles:

- Display of temperatures
- Start of defrost and
- Change of temperature settings.

The three lines come from a front-end type AKA. If your plant is connected to other front-ends, e.g. an AK-SC, they can be seen by selecting the AK-SC button.

Click on the line "Overview" and activate one of the keys, BarGraph or List.

"BarGraph"

If you select "BarGraph" you will obtain an easy-to-grasp, graphical display of the current temperatures at all points of refrigeration, and alarms from the controllers (high-temperature alarms) will likewise be indicated. This is a display you could typically have on all the time.

The bargraph will have the colours that were defined during the installation.



In the bottom left corner you will see a line on which the parameter name and status will be displayed for one column at a time. At the same time the relevant column is indicated.

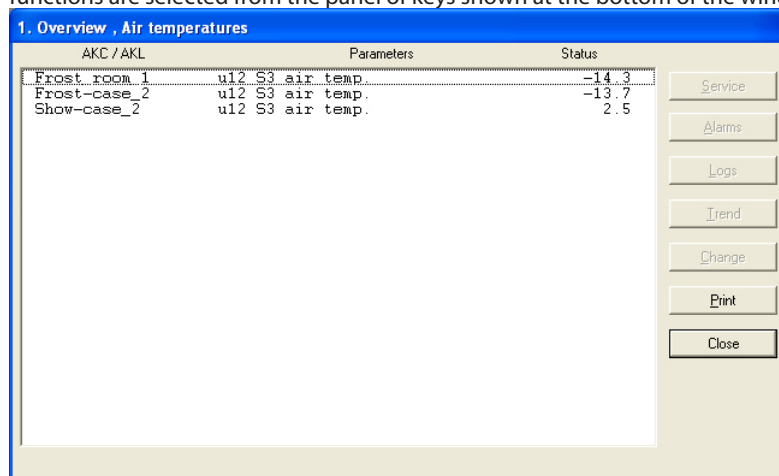
The display automatically changes bargraph every other second, but if you want to see the status of a special bargraph, all you have to do is to indicate the bargraph with the mouse and activate the left mouse key.

When you release the mouse key again, AK Monitor will return to automatic display. You may also change between the parameter name and appliance/room name under the columns by clicking with the mouse on the vertical text key.

(If the programme is unable to establish contact with one of the required controllers, the actual column will be shown in full height and hatched.)

"List"

If you select "List", you will obtain the same data as above, but now in text form. This window will at the same time enable you to see the trends of the refrigeration process for the connected refrigeration points, and you can make printouts of the information and make changes of the settings. All the functions are selected from the panel of keys shown at the bottom of the window.



"Service"

The service button is for radical interventions in the plant and is reserved for the service engineer. (The function is described at the end of the User's Guide).

"Alarm"

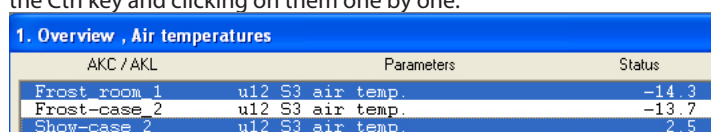
With "Alarm" you obtain an overview of the alarms from the relevant controller. You can adapt the filtration of alarms to this input angle.

"Logs"

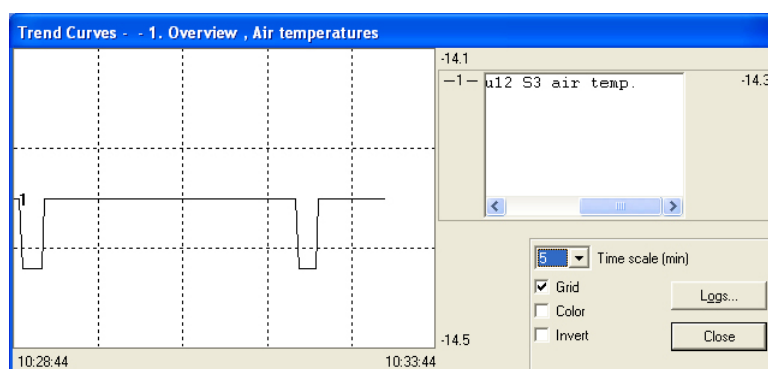
With "Logs" you get access to the logs belonging to this controller.

"Trend"

With "Trend" you obtain an overview of the development of a temperature performance. Select the line or lines for which you require a trend curve. You may select as many as eight, either by drawing the mouse across the lines or by activating individual lines by keeping down the Ctrl key and clicking on them one by one.



Now activate "Trend".



That will set up a new window on the upper half of the screen where you may choose to have curves drawn into the graph at 5 to 90-minute intervals. The chosen period of time is marked with start and stop times at the bottom left and right, respectively. (You may select a new

period of time in the "Time scale" field).

It is possible to remove the graph's grid - many find the display much clearer that way. Also the colours can be removed, if you use a black-and-white screen. In that case the curves will instead be numbered.

At whichever point of the curve you click the mouse, the time will be indicated under the graph. This means that you are able to identify the exact time of any deflections within the two "time extremes" at either side.

The Trend window furthermore contains a rolling field which can be used for changing between the name of the refrigerating point and the temperatures that are being measured.

"Change"

With "Change" you are allowed to change a function. See the next section.

"Print"

Print will see to it that the information contained on the screen will be printed on paper.

2. Defrost - times and extra defrost

By activating this line in the Plant overview you will obtain - in bargraph or table shape - an overview of the location of the individual refrigeration points during defrosts. You will furthermore be able to see how much time has been spent on the last defrost at each individual point. Among other things, this function can be used for identifying abnormal ice formations on an evaporator or defects in the heating element carrying out the defrost. If you use the bargraph display, you obtain a very clear picture where you can all the time see how the defrost is proceeding.

AKC / AKL	Parameters	Status
Frost room 1	u12 S3 air temp.	-14.3
Frost room 1	u09 S5 temp.	3.2

With this function you can also override the automatic defrost, if a refrigeration point should require it. You do that by clicking the mouse on the "Man. def." line opposite the relevant refrigeration point (it is normally in position OFF). Now push the "Change" key.

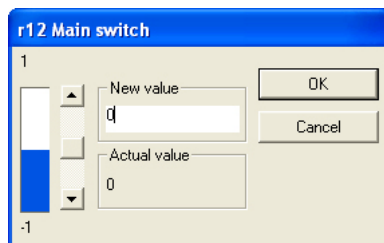
A small window will now appear in the middle of the screen which confirms the OFF setting, but makes it possible for you to change to ON. When you click "OK", the extra defrost cycle will be started. This is confirmed by the figure 3 in the status field on the "Defrost cond." line. (The setting returns to OFF, but the defrost has been started).

3. Setting of temperatures in refrigeration appliances

Here you can see how the actual air temperature at each individual refrigeration point develops in relation to the set value - and you can change the setting.

With the Trend key you can see the relation between the required temperature and the actual temperature - either in graphical shape or as a table. This is a good control that the plant is running the way you want it to.

If you want a temperature setting to be changed, first click on the line "Setting of temperatures" opposite the relevant refrigeration point. Now push the "Change" key. A small window will now appear on the screen.



The actual value is shown in the belowmost field, while the value in the field immediately above it may be changed by moving up and down with the "lift" in the rolling field. Or you can enter a new value in the field.

When the required value has been set, click "OK". The controller at the relevant refrigeration point will now automatically change the temperature.

Note however that the value you select must be within the limits suiting the refrigeration point. So it is no use to set a delicatessen counter for degrees below zero.

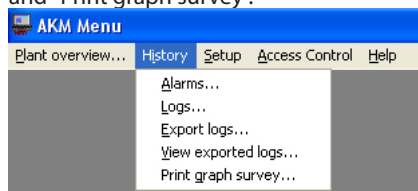
"Password"

If the master gateway is set to require a password, you will be asked to enter it. The new setting will only apply if the password is correct.

History

The AK Monitor programme also contains a section named History. As the name implies, information about the refrigerating plant is “stored” here for later use -either for the food safety authorities requiring documentation of a refrigeration performance during a period of time, or for the service engineer who must be able to see what happened in a particular show case two weeks ago. But it might also be useful for you to be able to check the operation of the plant.

Click on “History”. This gives you five options, viz “Alarms”, “Logs”, “Export Logs”, “View exported logs” and “Print graph survey”.



Alarms

By clicking here you obtain a display with a list of alarms that have arisen in the plant. They may typically be for too high temperatures at the relevant refrigeration points, but there may also be reports of, say, sensor errors, lack of refrigerant or faulty compressors.

For each alarm it is stated where and when it happened, what went wrong, and whether you or someone else have acknowledged it (accepted the alarm). If the alarm has been accepted, the name of the user accepting it will also be shown - and who is consequently responsible for something being done about it!

Please note that the alarm may both be accepted and still active: You or someone else may have accepted it, but the service engineer has not necessarily called yet.

You can sort the alarms by pushing the heading of a column.

Addr.	Site	Controller	Alarm Test	Custom...	St.	Active at	Accepted at	Accepted by	Cancelled at	Cleared at	Cleared...	Dur.	Action Code	Alarm Cond.	Alarm
00.000.005_009	xxx_yyy_London		Regelung A...		0	2010.08.2...	2010.08.2...	AKM1	2010.08.2...	2010.08.2...	AKM1	0:00	-	-	-
00.000.005_009	xxx_yyy_London		Regelung A...		0	2010.08.3...									
00.000.005_002	xxx_yyy_London		Reg. gesto...		0	2010.08.2...	2010.08.2...	AKM1	2010.08.3...			71:21	-	-	-
00.000.005_002	xxx_yyy_London		Reg. gesto...		0	2010.08.3...						0:00	-	-	-
00.000.005_010	xxx_yyy_London		Reg. gesto...		0	2010.08.2...	2010.08.2...	AKM1	2010.08.3...			71:25	-	-	-
00.000.005_010	xxx_yyy_London		Reg. gesto...		2	2010.08.3...							-	-	-
00.000.005_010	xxx_yyy_London		Reg. gesto...		0					2010.08.2...	2010.08.2...	AKM1	-	-	-
00.000.005_125	xxx_yyy_London	xxx_yyy_Lo...	Master Gat...		0					2010.08.3...			-	-	-
00.000.005_125	xxx_yyy_London	xxx_yyy_Lo...	Master Gat...		0					2010.08.2...			-	-	-
00.000.005_002	xxx_yyy_London		Communica...		0	2010.08.2...				2010.08.2...		0:00	-	-	-
00.000.005_002	xxx_yyy_London		Communica...		0	2010.08.3...				2010.08.3...		0:00	-	-	-
00.000.005_009	xxx_yyy_London		Communica...		0	2010.08.2...	2010.08.2...	AKM1	2010.08.2...	2010.08.2...	AKM1	0:00	-	-	-
00.000.005_009	xxx_yyy_London		Communica...		0	2010.08.3...				2010.08.3...		0:00	-	-	-
00.000.005_010	xxx_yyy_London		Communica...		0	2010.08.2...				2010.08.2...	2010.08.2...	AKM1	0:00	-	-
00.000.005_010	xxx_yyy_London		Communica...		0	2010.08.2...				2010.08.2...	2010.08.2...	AKM1	0:00	-	-

At the bottom of the display there is a number of keys with the following functions:

"Service"

The key "Service" will take you to the functions in a controller. If applicable, see page 17.

"Hide"

If there are one or two alarms you wish to remove from the list temporarily you can select them and then push „Hide“.

Upload them on the list again via „Views“ and the „Show suppressed alarm“ function.

"Page keys"

The page keys may be used for “leafing” through the alarm list.

"Views"

The total alarm list can be narrowed down so that only part of the alarms are shown. The required filtration must be accomplished with the “Views” button. (The filter function is described in the AKM Manual).

"Print" key

The printout key can be used for having all displays with alarms printed on paper.

"Accept" key

You can use the Accept key for acknowledging an alarm that has not yet been accepted. Click a line black (active) and push “Accept”. In so doing you “accept” the alarm. You may accept several alarms at a time by first depressing the keyboard’s Ctrl-key and then clicking on the required lines with the mouse.

Accepting an alarm only means that you have seen the alarm - so remember to take an initiative to have the error remedied.

Logs

To log means to collect data. AK Monitor carries out logging of all the functions it has been set to do by the installer. By pushing "Logs" you obtain an overview of the refrigeration points and the functions that are being logged in your refrigerating plant.

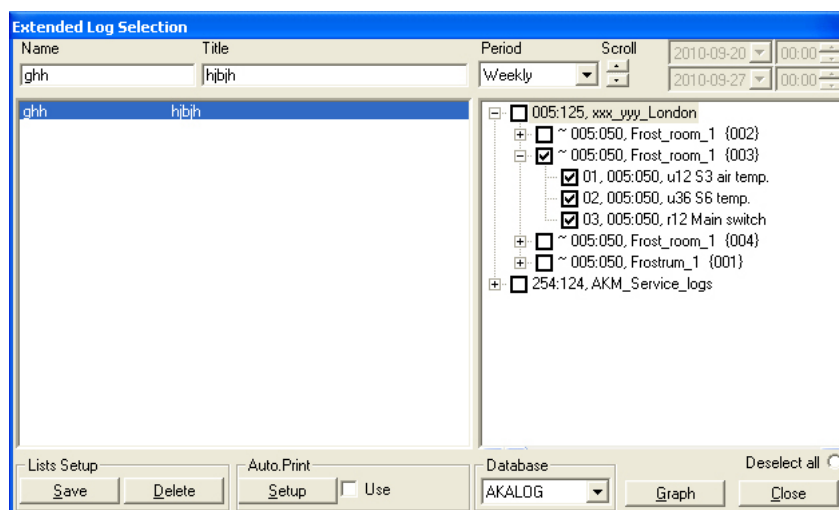
To you as shop owner it would be the obvious thing to log the air temperature at the refrigeration points. In this way you can document to yourself, your customers and the authorities that high product quality is a matter of course in your refrigerating plant.

For the sake of clarity it would be a good idea to divide the logging of air temperatures up into refrigeration and freezing appliances.

The programme should furthermore be geared to log the data specifically required by the food safety authorities when they make control visits.

If you for instance have a line on the display called Frost cabinet - Air temperature, you can by activating it and pushing "OK" obtain a display with curves for the different freezing appliances and cold rooms in the shop.

Before that you have to determine, however, for how long logged data are to be shown at a time. You can set this in the box named "Period" where you have four options: hourly, daily, weekly and monthly. Your choice will determine the period of time covered by the horizontal time axis on the display below.

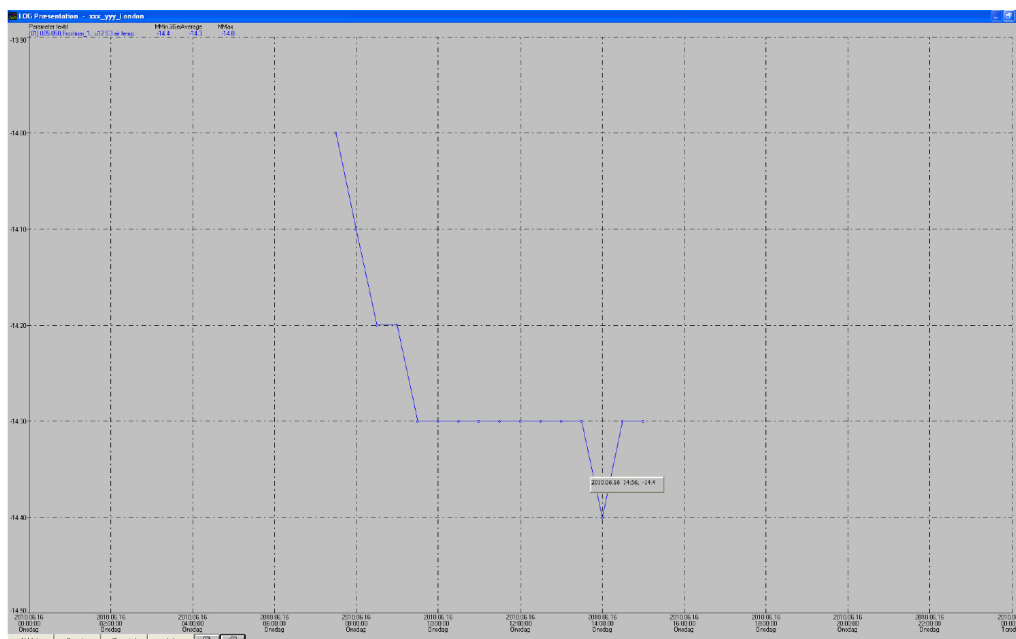


Select one of the lists.

- Select a "Period" corresponding to the "field" you wish to click at a time.
- Activate "Graph" to have the data for the selected period of time displayed.

The air temperatures in the appliances can be presented in the shape of curves with each its own colour. This gives an extremely clear presentation of the cooling performance during the selected period.

If you do not have a colour screen, or if the curves are to be printed in black-and-white, the colours can be switched off, cf. below under "Setup".



“Print”

When you click here a box will appear at the centre of the display which partly will tell you which printer will be activated, and gives you the choice of a printout with curves or with a table. You do not have to worry about the printer type. The installer arranges that from the start. If you have access to both colour and black-and-white printers, it would be advantageous to be connected to both, so that you can choose between them if you change between curve and table printouts. After all, there is no reason to have columns of figures done in expensive colour prints. When you have made your choice, push “OK”.

“Setup”

Here you can decide for yourself what you want the display to look like. In the “Grids” box you can remove the vertical or horizontal broken lines - or both - in the graph. Or you can change the appearance of the lines by clicking on the arrow in the lowermost field. In the “Point style” box you can change the curves either by providing them with transverse lines or circles. In this way it will be indicated on each curve exactly when a logging was performed. Finally it is possible for you to switch off the colours. They will in that case be replaced by numbers.

“Zoom in”

With this key the arrow on the screen is transformed into a small magnifying glass which you may use, if you want to go into details regarding some interesting aspects of the refrigeration process. You do it, as follows:

Place the magnifying glass at the border of the area you want to have a close look at. Click with the mouse. You can now draw a square around the area. When you have “fenced in” the required area, click with the mouse once more. The section of the graph you want to study will now cover the whole screen.

Note that the AK Monitor in “Zoom in” position only can print curves.

When you wish to abandon the section, it is done by means of the same key which for this purpose is named “Zoom out”.

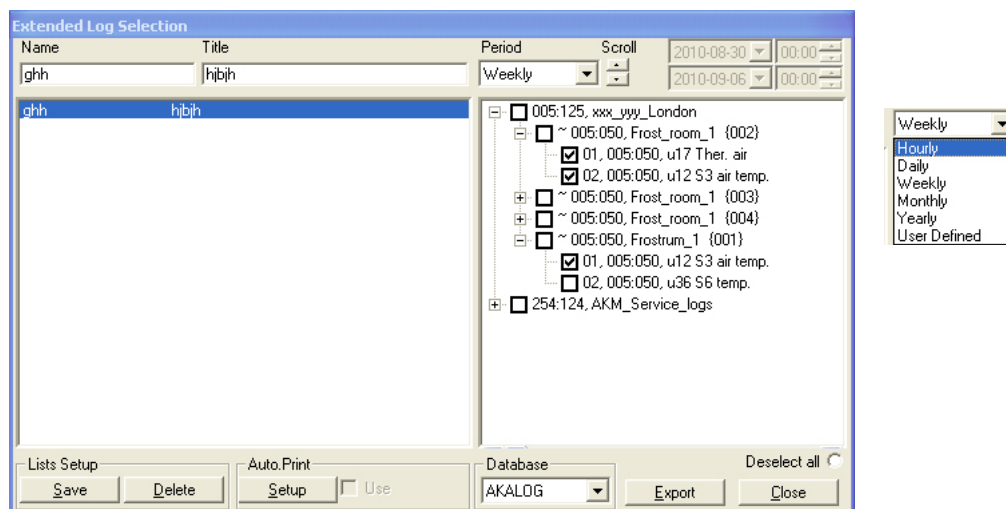
“Side keys”

Are used for leafing through the log history. With each click you will advance or move back a month, week, day or hour. If you have selected “Period”, you may find that it is not the latest here-and-now time that is displayed. This is because the AK Monitor does not constantly receive log data from the plant’s controllers. Consequently, the programme only shows the data from the last registered hour. In this way you do not have to leaf through several “empty hours”.

Export Logs

This function makes it possible to transfer a data collection to a file. The file can then be opened later and data processed in a spreadsheet.

Only data which have been stored can be transferred. New data that still lie in the memory (RAM) must first be stored on the hard disk before they can be transferred (data can be stored manually by keying the icon "AKM Log" and then keying the "Save logs").

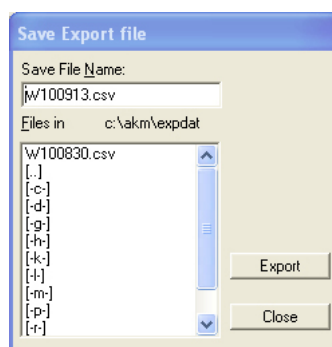


The display will show all the log lists that have been established.

Select one or more of the log lists.

The time period for data collection is limited and "Export" must be keyed.

(A maximum of 128 logs can be selected for the same "Export".)



The programme itself will suggest a file name which is determined by the period of time selected.

D + date, if a day has been selected (yesterday's date)

W + date, if a week has been selected (date will indicate the start of the week)

M + date, if a month has been selected (date will indicate the start of the month)

Y + date, if a year has been selected (date will indicate the start of the year)

Push "Export" and the data will be copied in the file (the display will show the path and the name of the library where the file is saved).

When the file is opened later, the individual logs with data will be shown, as under the graph presentation.

View exported logs

With this function you can open a data collection which you saved in the previous section.

Print graph survey

If you want to have your log graphs printed out by a printer, you can use this function. Here you may select, *inter alia*, log type and the period to be printed out.

Automatic delivery of printouts

As mentioned, there should be a special logging that collects the special data required by the food safety authorities for their control. You can have your installer set up this logging, so that the programme automatically prints out log data at fixed times, for example once a day.

The advantage of this is that you can gather the relevant data in a binder or the like, so that they are ready to be handed over when control visits are made.

The "Automatic printing" function is active when a ✓ has been placed in the field "Auto. print" / "Use" and a "+" opposite the log name and title in the menu named "Extended Log Selection". ("History" - "Logs".) (show on page 13)

Automatic printout takes place in table form.

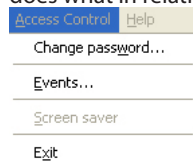
Setup

AK Monitor contains yet another section, i.e. setup. It contains a large number of functions which can be used for adapting the programme setup to your particular refrigerating plant. It requires special knowledge however which is reserved for your installer, and you therefore do not have access to this part of the programme.

As mentioned earlier, the installer can however to a large extent consider your wishes, when he sets up the programme. You may therefore participate in the decision-making from the very start and later have things adapted which in your opinion do not function the way you want them to.

Access Control

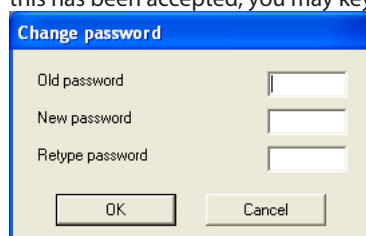
The last part of AK Monitor is called Access Control. In it you have a number of ways of controlling who does what in relation to your refrigerating plant.



Change password

Here you can change your access password for entering the programme. You may for example do this if you suspect that others have got wind of your old password.

When you click on the line a box will appear which will first ask you to state your old password. When this has been accepted, you may key in a new one of max. six characters.



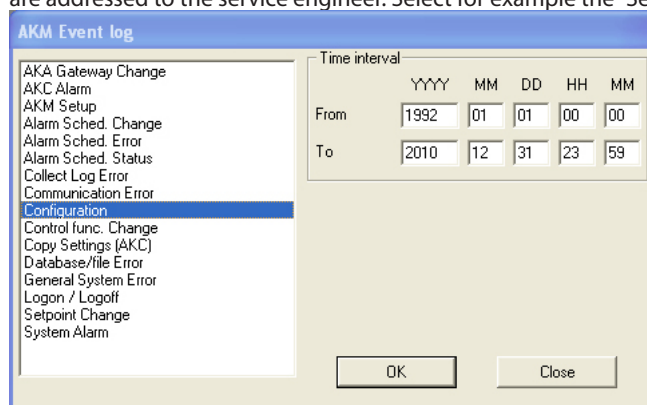
- First key in your old password, and then your new password.
- Please note that only stars are shown when you key in your old password.
- Finish by clicking "OK" (or interrupt the process, if you change your mind).

Event log

You may use this function if you want to know, for example, who has made which settings in the refrigerating plant. It might for instance be nice to establish who is responsible if all the cheeses are suddenly frozen!

Click on the "Events ..." line. A box will now appear at the centre of the screen where you first have to enter the period of time for which you require data.

In the lower part of the box there are a number of possibilities of obtaining information. Most of them are addressed to the service engineer. Select for example the "Setpoint change" line and click "OK".



You will now obtain an overview of all the settings that via the AK Monitor have been made in the refrigerating plant during a given period of time - and by whom. It may for instance be a matter of changes of temperatures at the refrigeration points, and all manual defrosts have likewise been registered. Click the "Print" key, if you require a printout of the list.

Important: Remember that data are only stored in accordance with the selected storage period set up under "Setup" -> "AKM Setup" -> "No. of days to keep historical data".

Screen saver

This is a function which protects the screen, as it is not good for it to display the same data for hours. The programme is therefore usually arranged in such a way that the screen saver will automatically start after a certain number of minutes.

Another of the screen saver's functions is to ensure that no one else abuses your access to AK Monitor. If you for instance have to leave the display in a hurry, you may click on this line whereafter the screen will go black (or you may push function key F4). If the programme has been set up in such a way that it will require a password to enter it from a "blank screen", no unauthorised person will have access to your refrigerating plant.

If you have safeguarded yourself against "busybodies" in this way, you must however realise that no one else can log his/her way into AK Monitor, until you have come back to finish your job. You can avoid that situation, if you instead of using the screen saver leave the programme via the Logoff key at the bottom right.

Exit

Here you can exit AK Monitor (if the line is in black print - if it is in grey print, you are not authorised to do it).

The purpose of terminating the programme could be that you wish to make room for operation of other programmes. As mentioned in the introduction, Danfoss however does not recommend a termination of the programme. AK Monitor can only receive alarms and data from the refrigerating plant, when the programme is operating.

Click on the line. In a box at the centre of the screen you are asked if you want to terminate. Push Yes to do it, push No, if you change your mind.

Logoff

(At the bottom right on the screen)

Use this function for terminating, when you have seen or adjusted what you wanted to in AK Monitor. After the click you receive a brief acknowledgement of the logoff, and a box will now request the next user's initials and password for another logon.

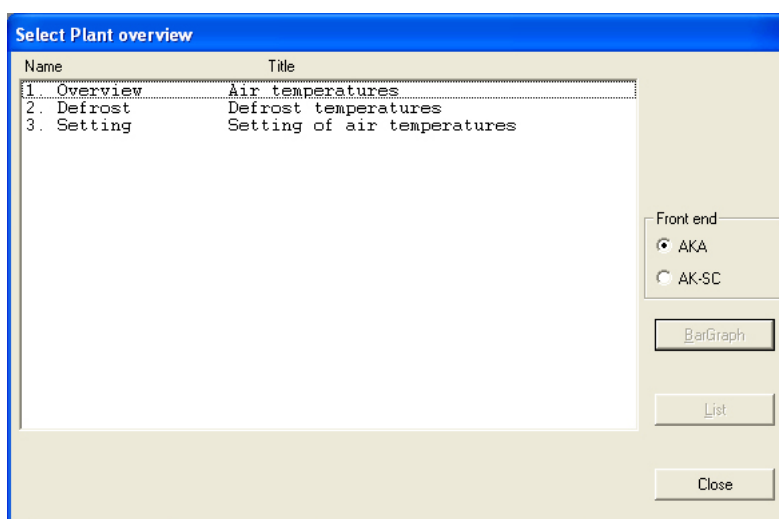
Appendix - Service via the plant overview

With this function it is easy for you to gain access to a controller's parameters. You may for instance use this function if there are problems with the temperature control of a refrigeration appliance. Here you will be able to identify the relevant controller via the plant overview, and here you can perform the necessary checks, e.g. study the collected data from the regulation or change a setting.

Use only the function if you are sufficiently familiar with refrigeration technology and with the controller settings, as you otherwise risk destroying something (e.g. goods or compressor).

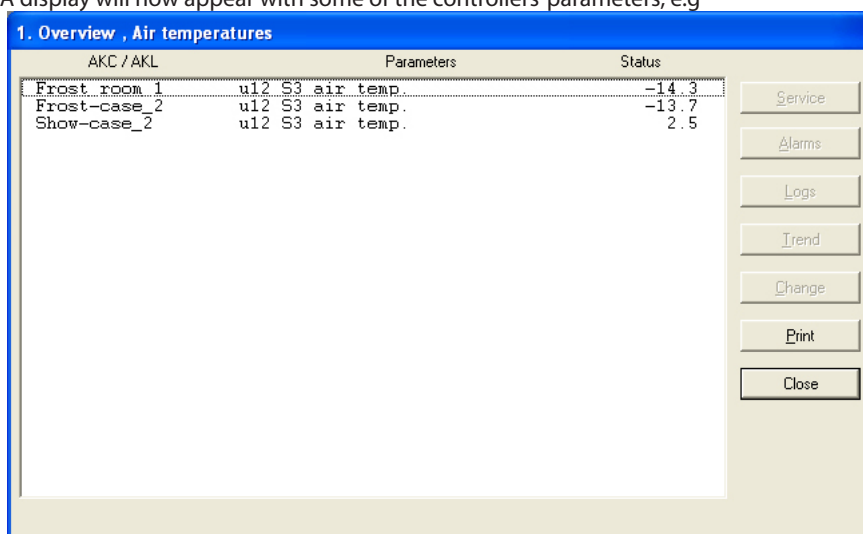
1. The function is started from "Plant overview".

2.



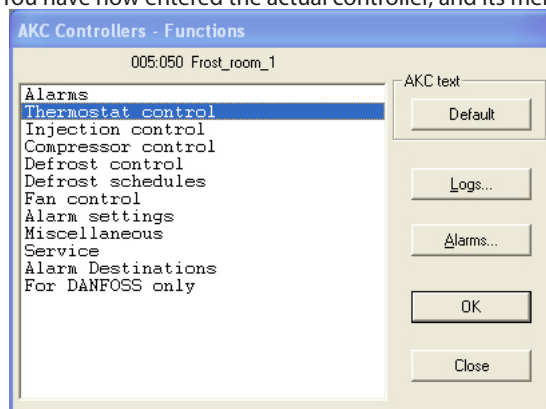
- Select a line now which you know contains parameters from the relevant controller.
- Proceed with a push on "List".

3. A display will now appear with some of the controllers' parameters, e.g



- Select a line (controller).
- Push "Service"

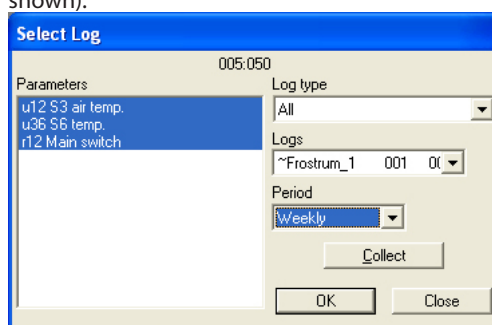
4. You have now entered the actual controller, and its menu groups will be shown to you, e.g.:



- Push "Logs", if you want to see the collected data, or
- Select a menu group and push "OK", if you want to see the controller's settings and maybe change them.

a. If you have pushed "Logs"!

You will see a display from the controller that can show which parameters have been defined, so that they can be gathered in a log. (Both started and stopped logs, if applicable, will be shown).



1. Log type

May be data collection in either the AKM programme or in AKA (master gateway). Here you may choose whether you want to see logs from one or the other, or from both.

2. Logs

Select one of the available logs. Now the parameters defined in this log will be shown.

3. Parameters

Select one or more parameters to be presented.

4. Period

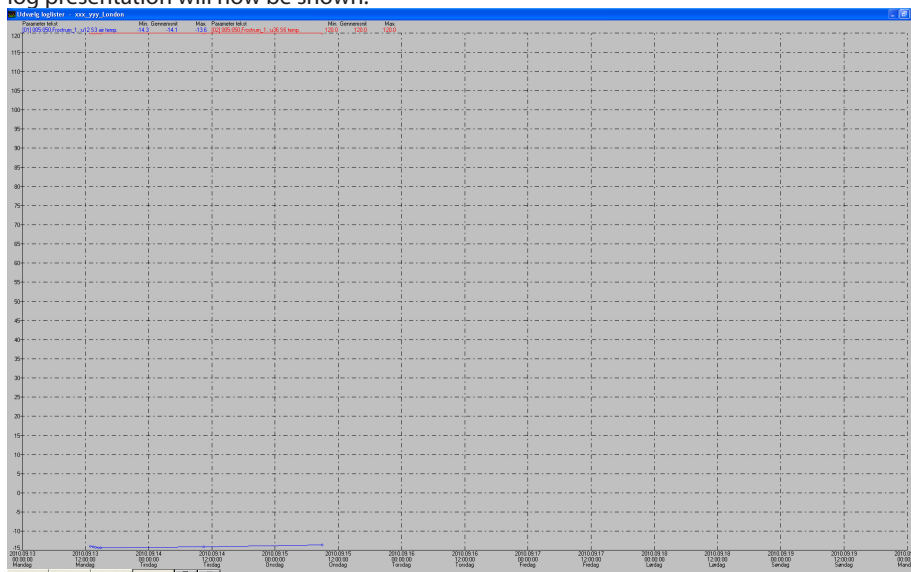
Select the period of time you want displayed on the screen. If you select "weekly" you may then later advance or move back by weeks in the data collection.

5. Collect

If you want to include the latest data in the presentation, you can do this by pushing "Collect". When the data have been obtained, you can have them presented.

6. OK

When you have selected one or more parameters for presentation, you can push "OK". The log presentation will now be shown.



In this display you can study the collected data in more detail.

- "Print" enables you to print out log data in either curve or table shape.
- "Setup" enables you to remove/change the grid, to change between colours and black-and-white, and to indicate measuring points.
- You may use the "Zoom in" function when you want to have a closer look at a specific area.
- With the "Page up" and "Page down" keys you can move up or down in the log data.

b. If you have pushed "Alarms"!

See alarms page 10.

c. If you have pushed "OK"!

You will see a display from the controller where measurements of various parameters are depicted on the left, and settings on the right, e.g.:

Measurements		Settings	
--- Ctrl state	10	r12 Main switch	0
u17 Ther. air	180.0	r14 Therm. mode	1
u12 S3 air temp.	-14.3	--- Cutout °C	2.0
u16 S4 air temp.	180.0	r01 Differential	2.0
u09 S5 temp.	3.2	r02 Max cutout °C	50.0
u36 S6 temp.	120.0	r03 Min cutout °C	-50.0
u90 Cutin temp.	4.0	r15 Ther. S4 %	100
u91 Cutout temp.	2.0	--- Night setbck	OFF
u56 Display air	180.0	r13 Night offset	0.0
u18 Ther runtime	0	--- Forced cool.	OFF
u13 Night Cond.	OFF	r21 Cutout2 temp	-18.0
u86 Ther. band	1	o17 Disp. S4 %	100
		r04 Disp. Adj. K	0.0
		r16 MeltInterval	1
		r17 Melt period	5

AKC text

Default Trend Change Close

- If you wish to follow one or more measurements here and now, you may select as many as eight of them and then push "Trend". You can now follow the measurements until you leave the trend function.
- If you instead wish to change a setting, you may select it and push "Change". You will now obtain a display where setting can be performed. When you have changed the value and push "OK", the new setting will be transmitted to the controller.

